

AMERICAN ASSOCIATION OF PROFESSIONAL LANDMEN

Local Association Award

**Best Newsletter/Bulletin – Large Association
(During Calendar Year 2020)**

Awards Committee Evaluation Form

To be completed by Local Association with membership of more than 250

Local Association Name: Tulsa Association of Petroleum Landmen

Date Newsletter/Bulletin Published: December 2020

Number of Members in Local Association: 304

Is Newsletter Prepared By: Staff Volunteers Only Both

ATTACH THIS ENTRY FORM TO YOUR BEST NEWSLETTER/BULLETIN (nominations that are not attached to a newsletter/bulletin will not be considered).
(No comments or further explanations will be considered)

To Be Completed By Awards Committee

The following criteria are listed to assist in the evaluation of Local Association Newsletters/Bulletins.

<u>Criteria</u>	<u>Points</u>	<u>Score</u>
EDUCATIONAL VALUE TO MEMBERS	0-8	_____
COVERAGE (Local, National & Industry)	0-7	_____
GENERAL APPEARANCE AND LAYOUT	0-5	_____
OVERALL PRESENTATION	0-5	_____
	Total Points	<input type="text"/>



NEWSLETTER - DECEMBER 2020 EDITION

What's Inside:

(Click to link to page)

1. Table of Contents
2. Letter from the President
3. In Memory of Cheryl Paige
4. Toys for Tots - December Social
5. Comprehensive Sponsor Spotlight: Gable Gotwals
6. TAPL Annual Sporting Clay Shoot
7. TAPL Mentoring Program
8. 2020-2021 Comprehensive Sponsors
9. Comprehensive Sponsorship Info
10. Ask the Attorney
11. 2020-2021 TAPL Event Schedule
12. Upcoming AAPL Education Events
13. AAPL Award Nomination
14. TAPL Educational Waiver
15. Land Links
16. 2020-2021 Board of Directors
17. Landman Activities

TAPL Upcoming Events

December's Annual Toys for Tots Social Event has been cancelled.

See page [4](#) for more details



TULSA
Association of Petroleum Landmen



Linked in





DECEMBER 2020 NEWSLETTER

LETTER FROM THE PRESIDENT

Dear TAPL Members,

Greetings everyone. The TAPL Board wishes you and your loved ones health and happiness this holiday season.

Thank you to those of you who could join us on November 9th to hear from Rick Muncrief, Chairman and CEO of WPX Energy. I thought it was a great night. We're very grateful to Rick for agreeing to speak amid such a hectic schedule. And thank you to WPX Energy and our WPX members for being great sponsors, and for a great WPX turnout. It was great to see many familiar faces and connect with a few new folks.

Many thanks to our Educational Director, Greg Geist, for setting up such a great speaker for our educational luncheon on November 17th. Dr. Jabraan Pasha, MD's presentation on implicit bias was fascinating. Dr. Pasha is a great presenter and it was a very interesting and informative presentation. Thank you very much to Dr. Pasha for spending some time with us and making us think. This was our first Zoom educational luncheon and, I have to say, it went pretty darn well. We had record attendance for an educational luncheon. For sure over 40, but with a few conference rooms full of folks at offices, it might have been more like 60. The writing is on the wall that we should look into offering more continuing education opportunities like this via zoom and at no cost.

We are sad to have to cancel our Toys for Tots Christmas Social. But the Board felt it best to cancel. TAPL loves partnering with the Marines and Toys for Tots, who try to provide toys to families that need a little support. We hope you saw our note about ways you can still support Toys for Tots this holiday Season and hope you will consider donating.

Our January Social is a little up in the air at the moment. We are considering sending a survey to membership to see if there's enough interest to have a small event to watch the NCAA football National Championship. Or, depending on variables outside of our control, we may have to cancel. We don't take cancelling events lightly. We'll continue to monitor things and provide as many events as we can throughout the rest of this year. Skeet shoot in February looks positive, so stay tuned for more updates.

We were so sad to hear about Cheryl Paige's passing. We have certainly lost too many wonderful land and legal folks over the past few years. Cheryl was such a joy to be around. She had such a positive impact on so many people throughout her life. God bless Cheryl and her loved ones. Please see Cheryl's obituary in this newsletter.

Please check out our featured sponsor in the newsletter this month, Gable Gotwals. Thank you to the crew over at Gable for sponsoring this year. We greatly appreciate it. Really talented group of people in my opinion, and I suspect many of you echo that.

We have some mentoring opportunities available for our University of Tulsa students. If you could by chance make the small time investment, please contact Tayler Peterson for more information. More info in this newsletter.

As always, if you have any questions, concerns, suggestions or otherwise, please reach out to myself or any of our Board Members. Merry Christmas and Happy New Year to you and yours! Cheers to 2021.

Hope to see you at our upcoming events!

Sincerely,

Michael D. Schooley, CPL
TAPL President



DECEMBER 2020 NEWSLETTER

In Memory of Cheryl Paige

Cheryl Lynn Paige, born December 19, 1953 in Nowata, Oklahoma and passed from this life on Saturday, November 21, 2020 at her home in Sapulpa, Oklahoma.

Cheryl attended Nowata Schools and graduated from NHS with the Class of 1972. She played the flute and was Drum Major in the NHS Marching Band. After high school she attended Central State College in Edmond.

Cheryl had a long and successful career in the Oil and Gas Industry, working for several companies in Oklahoma and Texas. She retired from Cimarex Energy Company in Tulsa in 2018. Cheryl loved to travel and had been many places in and out of the United States, but her favorite place to vacation was Montana. She loved the mountains, the village of Whitefish, and Wild Horse Island. But the place she loved the most was Grand

Lake. She was a gracious host and was very generous with her Lake Home. She took many friends and relatives on boat trips around the lake and could back a boat in better than anyone! Cheryl was a very loving owner of her dogs, Gracie and Montana. One of her hobbies while living in Dallas was singing with the Sweet Adeline Chorus "The Richtones." While singing with "The Richtones," they won first Place at the Sweet Adelines International Competition in Baltimore. Cheryl fought a brave and courageous battle with Cancer, always taking the high road and keeping a smile on her face. She was loved her family and friends and was fiercely loyal to them.

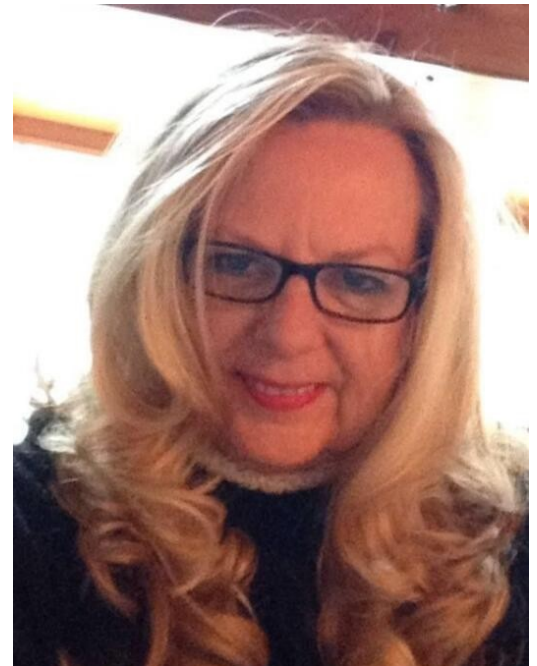
She is survived by Best Friend, Glenn Myers, Sister and Brother-in-law, Karen and John McCracken of Sapulpa, several nieces and nephews and two great nieces.

Cheryl was preceded in death by her parents Bob and Jewel Fern Paige and grandparents Roy and Cora Plecker and Chester and Ruby Paige.

The family would like to thank Griswold Home Health and Grace Hospice for the wonderful care they provided.

Cheryl's family would like to request that any remembrances be made to Wild Heart Ranch, P.O. Box 170, Foyil, OK 74017 or use PayPal.me/wildheart (non-profit #05-0541861) or any Animal Shelter of your choice.

A private family memorial service will be held at a later date. Arrangements are under the direction of Benjamin Funeral Service of Nowata. Online condolences may be left at www.honoringmemories.com.





DECEMBER 2020 NEWSLETTER

TOYS FOR TOTS - DECEMBER SOCIAL



2020 December Social Cancellation Notice

Dear TAPL Member,

The TAPL Board of Directors regrets to inform the membership that it has made the difficult decision to cancel this year's annual Toys for Tots December Social event due to the ongoing pandemic caused by the COVID-19 virus. While we strive to provide to our members with as many networking events as possible, the Tulsa area has seen a recent spike in the number of COVID-19 cases, and we feel that it is necessary to cancel the in-person event in an effort to put the safety of our members first. The TAPL Board of Directors will continue to monitor the ongoing pandemic and will update the membership as to the status of upcoming networking events accordingly.

TAPL has a long standing tradition of contributing monetary and toy donations to Toys for Tots. Despite the unfortunate cancellation of the December Social Event, the Board is encouraging the membership to continue the annual tradition by using one of the three options outlined below..

- [Donate Toys Online](#)
- [Donate Monetarily Online](#)
- [Donate Toys in Person](#)—TAPL has arranged to provide its members with physical drop off locations. If you prefer, you can do your shopping at your favorite local store and drop off your donation at one of the following sites:

Drop off Deadline for Donations will be 12/14/2020

Cimarex Energy Lobby

202 S. Cheyenne Ave., Tulsa, OK 74103 - Check in with Security upon arrival.

Anchor Land Group Lobby

5800 S. Lewis Ave, Suite #266, Tulsa, OK 74105 - Check in with Alex Robinson upon arrival at (918) 695-2380.



TAPL would like to recognize Murray Land Services for its generous contribution to this event!



DECEMBER 2020 NEWSLETTER
COMPREHENSIVE SPONSOR SPOTLIGHT



We are Energy Law



www.gablelawlaw.com

For more information on becoming a Comprehensive Sponsor, please refer to page [9](#)



DECEMBER 2020 NEWSLETTER
TAPL ANNUAL SPORTING CLAY SHOOT



**SAVE THE DATE:
SPORTING CLAYS
at THE TULSA GUN CLUB**

TAPL's Annual Sporting Clay Shoot will be held at the **Tulsa Gun Club** on February 19, 2021. Please mark your calendars and plan to attend!



For any questions or to discuss sponsorship opportunities please contact the Events Director, [Kristina Barnes](#).

TULSA GUN CLUB



DECEMBER 2020 NEWSLETTER

TAPL MENTORING PROGRAM



TAPL MENTORING PROGRAM



VOLUNTEERS NEEDED

TAPL'S Scholarship, Endowment, Awards, and Mentoring (SEAM) Committee is currently looking for volunteers who are willing to be a mentor for the TAPL and University of Tulsa Mentoring Program. The purpose of the mentoring program is to pair junior and senior Energy Management students at the University of Tulsa with a land professional here in the Tulsa area in order to impact the next generation of land professionals, both during their education and after.

With the challenging times the industry currently finds itself in, it is now more important than ever to invest in this next generation of land professionals as they transition into the oil industry. Many former mentees have become land professionals here in the Tulsa area, and credit the mentoring program and the networking it provides as critical to early success in their careers.

As a mentor, you will be asked to attend a monthly luncheon with your student mentee where you will network with other land professionals, meet their respective mentees, and get to hear from awesome guest speakers within our industry. In addition to monthly luncheons, you will be asked to meet with your mentee once a month outside of TAPL events. Many mentors in the past have used this opportunity to meet up with their mentee for coffee, lunch, or even to bring their mentee up to the office to show him or her the day-to-day tasks of a land professional.

The SEAM committee is also planning a happy hour for mentors and their mentee to attend, in addition to many other fun events!

While these events are subject to change due to COVID, the SEAM committee is currently planning to begin events early this winter. We will continue to keep everyone updated as we near closer to this time frame.

The SEAM committee is very excited for all we have planned for this program and feel this will allow TAPL to have an even greater impact on our community's future land professionals and local Energy Management program. If you are interested in becoming a mentor, please reach out to Dustin Cates at dcates@paladinlandgroup.com.

Best Regards,

Taylor Peterson

Scholarship, Endowment, Awards, And Mentoring Committee

Communications Director



DECEMBER 2020 NEWSLETTER
2020-2021 COMPREHENSIVE SPONSORS

TAPL would like to thank and recognize the following 2020-2021 Comprehensive Sponsors for their generous support!

GOLD SPONSORS



SILVER SPONSORS



BRONZE SPONSORS





DECEMBER 2020 NEWSLETTER

COMPREHENSIVE SPONSORSHIP

COMPREHENSIVE SPONSORSHIP 2020-2021

Tulsa Association of Petroleum Landmen

This year, the TAPL Board decided to enhance its Comprehensive Sponsor experience. We know that, as a sponsor, your objectives are to promote brand awareness and engage with our 250+ (and growing!) members. Throughout this packet, you will find new opportunities, exclusive to Comprehensive Sponsors, that will undoubtedly serve as paths to achieving those goals. TAPL's charge is to facilitate excellent networking and educational opportunities so that each member and company can continue to accelerate their career and business. Sponsorship plays a pivotal role in creating that environment. TAPL looks forward to partnering with you as a 2020-2021 Comprehensive Sponsor.



If interested in becoming a comprehensive sponsor, please contact [Kristina Barnes](#). For full details regarding sponsorship opportunities [click here](#)



DECEMBER 2020 NEWSLETTER

ASK THE ATTORNEY

ASK THE ATTORNEY

BY: JACOB CHARNEY

CHARNEY BROWN, LLC

Welcome to “Ask the Attorney.” This new monthly segment will provide TAPL members an opportunity to get their energy related legal questions answered—without that hefty legal bill. Whether you have a unique title issue or just a general legal question, this segment will provide you guidance. Each month I will select one submitted inquiry and provide an analysis.

QUESTION:

In Oklahoma, how does a Court determine whether a lease has terminated due to becoming incapable of producing in paying quantities? If determined to be incapable of producing in paying quantities, is the lease considered terminated upon the judicial order?

ANSWER:

The seminal Oklahoma case regarding lease termination as a result of a well becoming incapable of producing in paying quantities is *Stewart v. Amerada Hess Corp.*, 604 P.2d 854 (Okla. 1979). There, the Oklahoma Supreme Court found that the question of whether a lease has terminated for cessation of production in paying quantities is a question that must be determined on a case-by-case basis, where “the result in each case must depend upon the circumstances that surround cessation.” *Id.* at 858 (emphasis added). The Court held that, in order for a lease to terminate as a result of the well ceasing to be capable of producing in paying quantities, there must be something more than just a “slight or short” cessation of production capability. *Id.* According to the Court, there must be a factual consideration regarding whether the cessation might have been “reasonable or justifiable in light of all the circumstances involved.” *Id.* The relevant holding is as follows:

[T]he lease continues in existence so long as interruption of production in paying quantities does not extend for a period longer than reasonable or justifiable in light of all the circumstances involved. But under no circumstances will cessation of production in paying quantities ipso facto deprive the lessee of his extended-term estate.

A decree of lease cancellation may be rendered where the record shows that the well in suit was not producing in paying quantities and there are no compelling equitable considerations to justify continued production from the unprofitable well operations.

Id. at 858.

Accordingly, the analysis is two-fold and dependent upon the facts of each case. The first step in the analysis is to determine whether the subject well did in fact, at some point, become incapable of producing in paying quantities. If this cannot be shown, then the analysis ends, and the lease cannot be found to have terminated under its own terms. However, if it can be shown that the well did become incapable of producing in paying quantities, then the second step in the analysis is to determine if the cessation was “reasonable or justifiable in light of all the circumstances involved.” If the lessee can offer sufficient proof regarding a legitimate justification, then the lease will be declared still in force. On the other hand, if there is not sufficient justification for the prolonged cessation, then the lease will be declared terminated. And as made clear by the *Baytide*, *supra*, case, the termination of such a lease will be **deemed** to have occurred, not when the judicial order issued, but rather at some point in the past—a point, moreover, that will also be determined based upon the unique facts of the case.

According to binding Oklahoma Supreme Court authority, “it is the failure to produce in paying quantities during the lease’s secondary term rather than the entrance of a court order which terminates a lease.” *Baytide Petroleum, Inc. v. Continental Resources, Inc.*, 231 P.3d 1144, 1149 (Okla. 2010) (emphasis added). See also *id.* at 1145 (syllabus #1) (**“We hold that it is not the court order which terminates the lease. Rather, it is the failure to produce in paying quantities under the habendum clause during the lease’s secondary term.”** (emphasis added)).

Under Oklahoma law, therefore, a lease terminates, not upon the entrance of a court order finding that the subject well is incapable of producing in paying quantities, but instead when the well **actually** became incapable of producing in paying quantities. Consequently, the termination of a lease occurs **retrospective** to the judicial order finding that the subject well was not capable of producing in paying quantities. As explained by the Court, “the entrance of a judicial decree becomes necessary, not for the purpose of cancelling the lease, but to adjudicate the appropriate remedy.” *Id.* at 1149 (emphasis added) (citing *Enfield v. Atlantic Richfield*, 779 F. Supp. 33 (W.D. Okla. 1989)).

Do you have a legal question? Please submit it for next month’s segment to ask@charneybrown.com

“The information contained in this segment is provided for informational purposes only, and should not be construed as legal advice on any subject matter.”



DECEMBER 2020 NEWSLETTER

2020-2021 TAPL EVENT SCHEDULE

TAPL currently has the following membership events scheduled for the 2020-2021 year:

12/14	CANCELLED —Christmas Social Toys for Tots
1/11	January Social - Location TBA
2/19	Skeet Shoot - Tulsa Gun Club
3/8	Dinner Meeting - Summit Club
4/2	Spring Volunteer - Iron Gate
4/22	Spring Seminar +HH - OU Schusterman, Perkins Auditorium
5/10	Spring Golf Tournament - Indian Springs

More events, such as Educational Luncheons will be added to the above schedule as the dates and venues are finalized.

More information will be communicated to all members as each event gets closer, but go ahead and mark your calendars today! You won't want to miss out on any of these great events! [\(click to link to online event page\)](#)





DECEMBER 2020 NEWSLETTER

UPCOMING AAPL EDUCATION EVENTS

AAPL STATEMENT REGARDING CORONAVIRUS

AAPL is taking all developments concerning the coronavirus (COVID-19) very seriously and will continue to closely monitor the situation. At this time, we have made the difficult decision to postpone all in-person education events through **December 31, 2020**, to prevent the potential spread of the virus. We will continue to monitor the situation along with health authorities and the association's volunteer leaders. The health and safety of all our attendees is our highest priority.

Due to the ongoing uncertainty regarding the coronavirus situation, AAPL will not charge a cancellation fee if you decide to not attend an in-person event in the interim based on concerns around your health or travel.

December 2020 AAPL Education Events

- December 8: Working Interest & Net Revenue Interest Webinar
- December 11-12: December Board Meeting 2020
- December 18: AAPL RPL/CPL Exam Only - Fort Worth, TX

Tulsa Specific 2020 AAPL Education Events

- Stay Tuned for More Events!

Click [here](#) to register for these great events and to view a full calendar of educational opportunities.



DECEMBER 2020 NEWSLETTER

2020-2021 AAPL AWARDS NOMINATION



MEMBER NEWS

Call for 2020-21 AAPL Awards Nominations

You are invited to submit your nominations and entries for AAPL's 2020-21 Awards Program, which recognize members and local associations achieving the highest standards of excellence in the land profession.

Visit the [Awards/Nominations](#) section of our website for online award descriptions, submission process and downloadable entry forms.

Entries may be submitted online or mailed to:

Aaron R. Yost, CPL
AAPL Headquarters
800 Fournier St.
Fort Worth, TX 76102

Deadline for all entries is Jan. 10, 2021.

For more information regarding nominations, refer to link [here](#)



DECEMBER 2020 NEWSLETTER

TAPL EDUCATIONAL WAIVER

To promote the continued education of our members, the TAPL Board has approved educational event funding for unemployed members. To be eligible, you must have been a member during the 2019-2020 year and currently be an Active or Associate member. This credit will apply to the 2020-2021 Spring Seminar and Education Luncheons. Each qualifying member will receive a maximum benefit up to \$150.00 for the 2020-2021 year to be applied towards educational events at your discretion. The credit will be available when signing up for an educational event and applications will be subject to Board approval.

If you are interested in applying to receive TAPL's Education Waiver, you can download the form by clicking the below link.

[TAPL Education Waiver Form](#)

Please complete the form in its entirety and submit it to Rhonda Stacy at the email listed below for consideration. Once the TAPL Board of Directors has reviewed and approved your application, you will receive instructions on how to register for educational events and will be able to utilize the credit.

If you have any questions or need further information, please reach out to Rhonda Stacy at rhondalstacy@gmail.com.

Respectfully,

The TAPL Board of Directors





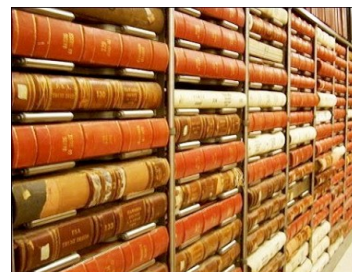
TAPL DECEMBER 2020 NEWSLETTER

Land Links: Your source for relevant and interesting industry news and links to helpful resources from around the web



LAND LINKS

Paladin Land Group's Courthouse Activity Scout Report



Local/Domestic News

[FERC fights Chesapeake's bankruptcy plan](#)

[Williams adds new member to board of directors](#)

[OK Senate Energy and Transportation Committees named](#)

[Permian Highway Start-Up Sending Natural Gas to Gulf Coast](#)

[The Companies That Could Benefit From A Major Pipeline Shortage](#)

[Pandemic Crushes U.S. Refining Capacity](#)

[US rig count shows slight gain in past week](#)

[Enel Green helps Northern Oklahoma College restart wind tech program](#)

International

[Aramco Hires Moelis to Raise \\$Bs from Asset Sales](#)

[The OPEC Member That Could Derail The Production Cut Plan](#)

[Pemex Imposes Vitol Business Ban](#)

[Chinese Oil Deal Could Bail Out Cash-Strapped Iraq](#)

[Russia Tightens Its Grip On Kurdistan Oil](#)

[OVL Makes Significant Colombia Find](#)

Helpful Resources:

[Schlumberger Oilfield Glossary](#) - Where the Oil Field Meets the Dictionary. Contains more than 4600 definitions and acronyms for major oilfield activities.

[AAPL Toolkit](#) - An invaluable resource center with facts & statistics regarding the oil & gas industry and our communities and environment. Provides resources needed to become true ambassadors for our industry.

Regulatory

[RRC Barred from Waiving Environmental Rules](#)

[Oil drilling OK'd in protected area of North Dakota Badlands; environmental groups cry foul](#)

[Biofuel groups and DOJ push their legal fight over biofuels](#)

[EPA okays new rule to roadblock Biden administration](#)

[Tighter drilling restrictions adopted around Boulder, Colorado](#)

E&P/Industry News Sites:

- [RBN Energy Daily Blog](#)
- [RBC Richardson Barr](#)
- [Oil & Gas Community](#)
- [Oil&Gas Journal](#)
- [Oil and Gas Investor](#)
- [Rigzone News](#)
- [Fuelfix](#)
- [OK Energy Today](#)



DECEMBER 2020 NEWSLETTER

2020-2021 BOARD OF DIRECTORS

TAPL 2020-2021 Board of Directors



<u>President</u>	Michael Schooley, CPL	mschooley@cimarex.com
<u>Vice President</u>	Alisha Stacy	alisha.stacy@ymail.com
<u>Secretary</u>	Mariena Martin, RPL	mmartin@cetulsa.com
<u>Treasurer</u>	Amber Cooke, CPL	amber.cooke@wpenergy.com tapltreasurer@gmail.com
<u>Past President</u>	Denton Smith, RPL	dsmith@cetulsa.com
<u>Membership Director</u>	Alex Robinson, CPL	alexrobinson@anchorlandgroup.com
<u>Events Director</u>	Kristina Barnes	khoffman@blackbeardoperating.com
<u>Communications Director</u>	Elliot Dowling, RPL	elliott-dowling@utulsa.edu
<u>Benefits Director</u>	Rhonda Stacy	rhondalstacy@gmail.com
<u>Education Director</u>	Greg Geist, CPL	greg.geist@wpenergy.com
<u>External Affairs Director</u>	Rob Sher, CPL	rsher@cimarex.com
<u>AAPL Director</u>	Adam Robinson, CPL	arobinson@olifantenergy.com



DECEMBER 2020 NEWSLETTER

LANDMAN ACTIVITIES

Name: _____

Date: _____

crude oil

LWCIIWSGVMLPPSCZMLALHXUX
EEAHTPANE AEGIEAJLXWTSOFL
SNGWWLXTQLUJLPNOLUSJJTPE
EAAAGQSTNTMFSPSRELDLKYTAS
IPCNUAHZMLLBETBUSNZVPVUO
DORIVFYLBGIZEAQIXOSCQAFB
VRUTHSDRNMSPLYOGQVRS LXTY
PPDAHAROCISTNSDIZGJELNWX
LZERZQOPZXOFOKXCRSNVKEHW
GTOOUECYNTFENAHTERPIOFPA
NMIPFIARXUXWNHPQYZFMLWBG
IYLAEURWRROKLOMGUZJQXICW
SOOVL PBDGEZEYAKVHLTITXOJ
NEZEWJODULFGZVNYGHAUDQTB
ESNUPDNFIRGIPSPQBMMVMDA
DWHAGFSHYRGXNFYUIEBMKIIR
NIDXHQPCOJOFXHLNTPBLFYT
OVUGCTSDIUQILRRVZFCDTKOI
CSEEITEVFYUAHYYYHRYAQHBS
ZQNUQMXMOZDDIHRJNUFRRHXB
YIANOITALLITSIDUBEEUBFYC
XETWBDBPTOSSFKDUAAXEYECZ
TNUJDKRZFUCHGYEPENTANEEB
HBBMJQB VVVGJLFPUDTNANJHY

hydrocarbons	fossil fuel	refinery	liquids
mixture	condensing	evaporating	boiling
distillation	fractional	propane	pentane
butane	ethane	methane	naptha
kerosene	bitumen	diesel	petrol
crude oil			



Courthouse Activity Scout Report

<u>Play</u>	<u>State</u>	<u>County</u>	<u>Courthouse Activity</u> 11/02/2020 - 11/06/2020	<u>Courthouse Activity</u> 11/09/2020 - 11/13/2020	<u>Courthouse Activity</u> 11/16/2020 - 11/20/2020	<u>Courthouse Activity</u> 11/23/2020 - 11/27/2020
STACK	(OK)	Blaine	5 Landmen	Less than 5 Landmen	4-5 Landmen	(NOTE: Figures affected by holiday week) 0-2 Landmen
STACK	(OK)	Kingfisher	5-8 Landmen	Less than 5 Landmen	4-5 Landmen	(NOTE: Figures affected by holiday week) 0-3 Landmen
STACK	(OK)	Canadian	10-11 Landmen	Less than 10 Landmen	7-10 Landmen	(NOTE: Figures affected by holiday week) 0-4 Landmen
STACK	(OK)	Custer	10 Landmen (by appointment only - 3 Landmen at a time per slot; 2 hour slots)	10 Landmen (by appointment only - 3 Landmen at a time per slot; 2 hour slots)	8-10 Landmen (by appointment only - 3 Landmen at a time per slot; 2 hour slots)	(NOTE: Figures affected by holiday week) 0-5 Landmen (by appointment only - 3 Landmen at a time per slot; 2 hour slots)
STACK	(OK)	Dewey	5 Landmen (4 Landmen at a time - 2 appointment slots at 4 hours each)	5-10 Landmen (4 Landmen at a time - 2 appointment slots at 4 hours each)	Less than 10 Landmen (4 Landmen at a time - 2 appointment slots at 4 hours each)	(NOTE: Figures affected by holiday week) 0-3 Landmen
STACK	(OK)	Washita	0-1 Landman	0-1 Landman	0-1 Landman	(NOTE: Figures affected by holiday week) 0 Landmen
MERGE	(OK)	Grady	7-10 Landmen (by appointment only - 4 timeslots and 4 per each timeslot)	10 Landmen (by appointment only - 4 timeslots and 4 per each timeslot)	6-10 Landmen (by appointment only - 4 timeslots and 4 per each timeslot)	(NOTE: Figures affected by holiday week) 0-4 Landmen
MERGE	(OK)	McClain	3-5 Landmen	Less than 5 Landmen	4-5 Landmen	(NOTE: Figures affected by holiday week) 0-2 Landmen
MERGE	(OK)	Caddo	5-7 Landmen (by appointment only - 8:30-3:30 with only 8 allowed together at a time- no restriction on appointment duration)	Less than 5 Landmen (by appointment only - 8:30-3:30 with only 8 allowed together at a time- no restriction on appointment duration)	4-5 Landmen (by appointment only - 8:30-3:30 with only 8 allowed together at a time- no restriction on appointment duration)	(NOTE: Figures affected by holiday week) 0-2 Landmen
MERGE	(OK)	Cleveland	0-1 Landmen	1-2 Landmen	0-2 Landmen	(NOTE: Figures affected by holiday week) 0-2 Landmen
SCOOP	(OK)	Garvin	Less than 5 Landmen (by appointment only - only 6 Landmen at a time)	3-5 Landmen (by appointment only - only 6 Landmen at a time)	4-5 Landmen (by appointment only - only 6 Landmen at a time)	(NOTE: Figures affected by holiday week) 0-2 Landmen
SCOOP	(OK)	Stephens	5 Landmen	4-5 Landmen	2-5 Landmen	(NOTE: Figures affected by holiday week) 0-2 Landmen
SCOOP	(OK)	Carter	Less than 5 Landmen	4 Landmen	3-5 Landmen	(NOTE: Figures affected by holiday week) 0-3 Landmen
SCOOP	(OK)	Murray	1-2 Landmen	0-1 Landman	0-2 Landmen	(NOTE: Figures affected by holiday week) 0-1 Landman
RED RIVER	(OK)	Jefferson	5 Landmen (by appointment only)	5-6 Landmen (by appointment only)	Less than 5 Landmen (by appointment only)	(NOTE: Figures affected by holiday week) 0-2 Landmen
RED RIVER	(OK)	Love	Less than 5 Landmen	Less than 5 Landmen	Less than 5 Landmen	(NOTE: Figures affected by holiday week) 0-2 Landmen
RED RIVER	(OK)	Marshall	1-3 Landmen (2 hrs max with only 2 Landmen at a time)	2-4 Landmen (2 hrs max with only 2 Landmen at a time)	2-3 Landmen (2 hrs max with only 2 Landmen at a time)	(NOTE: Figures affected by holiday week) 0-1 Landman

Courthouse Activity Scout Report



<u>Play</u>	<u>State</u>	<u>County</u>	<u>Courthouse Activity</u>	<u>Courthouse Activity</u>	<u>Courthouse Activity</u>	<u>Courthouse Activity</u>
			11/02/2020 - 11/06/2020	11/09/2020 - 11/13/2020	11/16/2020 - 11/20/2020	11/23/2020 - 11/27/2020
RED RIVER	(OK)	Bryan	0 Landmen	0-1 Landmen	0 Landmen	(NOTE: Figures affected by holiday week) 0-1 Landman
RED RIVER	(TX)	Clay	4 Landmen	5-6 Landmen	3-5 Landmen	(NOTE: Figures affected by holiday week) 0-2 Landmen
RED RIVER	(TX)	Montague	Less than 5 Landmen	3-5 Landmen	4 Landmen	(NOTE: Figures affected by holiday week) 0-3 Landmen
RED RIVER	(TX)	Cooke	6 Landmen	4-5 Landmen	Less than 5 Landmen	(NOTE: Figures affected by holiday week) 0-2 Landmen
RED RIVER	(TX)	Grayson	3-5 Landmen	Less than 5 Landmen	4-5 Landmen	(NOTE: Figures affected by holiday week) 0-1 Landman
RED RIVER	(TX)	Fannin	0-1 Landman	1 Landman	0-2 Landmen	(NOTE: Figures affected by holiday week) 0-1 Landman
ARKOMA	(OK)	Okfuskee	0-2 Landmen	0-2 Landmen	0-1 Landman	(NOTE: Figures affected by holiday week) 0-1 Landman
ARKOMA	(OK)	Hughes	9-10 Landmen	8-12 Landmen	10 Landmen	(NOTE: Figures affected by holiday week) 0-4 Landmen
ARKOMA	(OK)	Coal	2-4 Landmen	1-3 Landmen	2-3 Landmen	(NOTE: Figures affected by holiday week) 0-1 Landman
ARKOMA	(OK)	McIntosh	1-2 Landmen	1-3 Landmen	0-2 Landmen	(NOTE: Figures affected by holiday week) 0-1 Landman
ARKOMA	(OK)	Pittsburg	2-3 Landmen	2-4 Landmen	3-4 Landmen	(NOTE: Figures affected by holiday week) 0-2 Landmen
DEEP ANADARKO	(OK)	Ellis	0 Landmen (Records online so not much traffic)	0 Landmen (Records online so not much traffic)	0 Landmen (Records online so not much traffic)	(NOTE: Figures affected by holiday week) 0 Landmen
DEEP ANADARKO	(OK)	Beaver	1-3 Landmen (only 5 allowed in vault at a time)	1-2 Landmen (only 5 allowed in vault at a time)	1-3 Landmen (only 5 allowed in vault at a time)	(NOTE: Figures affected by holiday week) 0-1 Landman
DEEP ANADARKO	(OK)	Roger Mills	4-5 Landmen	Less than 5 Landmen	3-4 Landmen	(NOTE: Figures affected by holiday week) 0-2 Landmen
DEEP ANADARKO	(OK)	Beckham	3 Landmen (No more than 10 permitted in office at a time)	4-5 Landmen (No more than 10 permitted in office at a time)	Less than 5 Landmen (No more than 10 permitted in office at a time)	(NOTE: Figures affected by holiday week) 0-2 Landmen
DEEP ANADARKO	(TX)	Lipscomb	0-3 Landmen (temporarily relocated for renovation until Jan)	1-2 Landmen (temporarily relocated for renovation until Jan)	0-1 Landman (temporarily relocated for renovation until Jan)	(NOTE: Figures affected by holiday week) 0-1 Landman
DEEP ANADARKO	(TX)	Hemphill	0-1 Landman	0-2 Landmen	0-1 Landman	(NOTE: Figures affected by holiday week) 0 Landmen
DEEP ANADARKO	(TX)	Wheeler	Less than 5 Landmen	4-5 Landmen	3 Landmen	(NOTE: Figures affected by holiday week) 0-1 Landman

Courthouse Activity Scout Report



<u>Play</u>	<u>State</u>	<u>County</u>	<u>Courthouse Activity</u> 11/02/2020 - 11/06/2020	<u>Courthouse Activity</u> 11/09/2020 - 11/13/2020	<u>Courthouse Activity</u> 11/16/2020 - 11/20/2020	<u>Courthouse Activity</u> 11/23/2020 - 11/27/2020
MISS LIME	(OK)	Woodward	3-4 Landmen (2 allowed at a time in vault)	Less than 5 Landmen (2 allowed at a time in vault)	2-3 Landmen (2 allowed at a time in vault)	(NOTE: Figures affected by holiday week) 0-2 Landmen
MISS LIME	(OK)	Dewey	2-3 Landmen (by appointment only - 4 people max at a time; time slots are either 9-12 or 12:30-3:30)	0-1 Landman (by appointment only - 4 people max at a time; time slots are either 9-12 or 12:30-3:30)	2 Landmen (by appointment only - 4 people max at a time; time slots are either 9-12 or 12:30-3:30)	(NOTE: Figures affected by holiday week) 0-1 Landman
MISS LIME	(OK)	Major	3-4 Landmen	4-5 Landmen	Less than 5 Landmen	(NOTE: Figures affected by holiday week) 0-1 Landman
MISS LIME	(OK)	Alfalfa	5 Landmen	4 Landmen	3-4 Landmen	(NOTE: Figures affected by holiday week) 0-2 Landmen
MISS LIME	(OK)	Woods	3 Landmen (only allow 3 per DAY)	3 Landmen (only allow 3 per DAY)	3 Landmen (only allow 3 per DAY)	(NOTE: Figures affected by holiday week) 0-2 Landmen
MISS LIME	(OK)	Garfield	5 Landmen	3 Landmen	4-5 Landmen	(NOTE: Figures affected by holiday week) 0-3 Landmen
EAGLE FORD (PROPER)	(TX)	Maverick	0 Landmen	0 Landmen	0 Landmen	(NOTE: Figures affected by holiday week) 0 Landmen
EAGLE FORD (PROPER)	(TX)	Webb	1 Landman (Appointment not necessary, but would like to be called ahead of time)	0 Landmen (Appointment not necessary, but would like to be called ahead of time)	0-2 Landmen (Appointment not necessary, but would like to be called ahead of time)	(NOTE: Figures affected by holiday week) 0 Landmen
EAGLE FORD (PROPER)	(TX)	Zavala	4 Landmen (only 2 allowed at a time)	4-6 Landmen (only 2 allowed at a time)	Less than 5 Landmen (only 2 allowed at a time)	(NOTE: Figures affected by holiday week) 0-2 Landmen
EAGLE FORD (PROPER)	(TX)	Dimmit	NO ANSWER - BELIEVE INFO UNCHANGED FROM PREVIOUS WEEK) 0 Landman (CLOSED TO PUBLIC DUE TO COVID)	NO ANSWER - BELIEVE INFO UNCHANGED FROM PREVIOUS WEEK) 0 Landman (CLOSED TO PUBLIC DUE TO COVID)	NO ANSWER - BELIEVE INFO UNCHANGED FROM PREVIOUS WEEK) 0 Landman (CLOSED TO PUBLIC DUE TO COVID)	NO ANSWER - BELIEVE INFO UNCHANGED FROM PREVIOUS WEEK) 0 Landman (CLOSED TO PUBLIC DUE TO COVID)
EAGLE FORD (PROPER)	(TX)	Frio	5-6 Landmen (by appointment only - not as strict for appointments anymore)	4-6 Landmen (by appointment only - not as strict for appointments anymore)	3-5 Landmen (by appointment only - not as strict for appointments anymore)	(NOTE: Figures affected by holiday week) 0-4 Landmen
EAGLE FORD (PROPER)	(TX)	Le Salle	4 Landmen (by appointment only)	3-5 Landmen (by appointment only)	5 Landmen (by appointment only)	(NOTE: Figures affected by holiday week) 0-3 Landmen
EAGLE FORD (PROPER)	(TX)	McMullen	0-1 Landman	0-2 Landmen	0-1 Landman	(NOTE: Figures affected by holiday week) 0 Landmen
EAGLE FORD (PROPER)	(TX)	Live Oak	10 Landmen (by appointment only - 2 hour intervals)	10-12 Landmen (by appointment only - 2 hour intervals)	8-10 Landmen (by appointment only - 2 hour intervals)	(NOTE: Figures affected by holiday week) 0-6 Landmen
EAGLE FORD (PROPER)	(TX)	Bee	1-2 Landmen	1-4 Landmen	3 Landmen	(NOTE: Figures affected by holiday week) 0-2 Landmen
EAGLE FORD (PROPER)	(TX)	Atascosa	4-5 Landmen	4 Landmen	3-5 Landmen	(NOTE: Figures affected by holiday week) 0-3 Landmen

Courthouse Activity Scout Report



<u>Play</u>	<u>State</u>	<u>County</u>	<u>Courthouse Activity</u> 11/02/2020 - 11/06/2020	<u>Courthouse Activity</u> 11/09/2020 - 11/13/2020	<u>Courthouse Activity</u> 11/16/2020 - 11/20/2020	<u>Courthouse Activity</u> 11/23/2020 - 11/27/2020
EAGLE FORD (PROPER)	(TX)	Wilson	0 Landmen (Records can be found online)	0 Landmen (Records can be found online)	0 Landmen (Records can be found online)	(NOTE: Figures affected by holiday week) 0 Landmen
EAGLE FORD (PROPER)	(TX)	Karnes	30-35 Landmen	25-30 Landmen	25 Landmen	(NOTE: Figures affected by holiday week) 0-15 Landmen
EAGLE FORD (PROPER)	(TX)	Gonzales	1 Landmen	0-3 Landmen	2 Landmen	(NOTE: Figures affected by holiday week) 0-1 Landman
EAGLE FORD (PROPER)	(TX)	Dewitt	5-6 Landmen (call ahead to place name on their calendar - 3 at a time)	4-5 Landmen (call ahead to place name on their calendar - 3 at a time)	5 Landmen (call ahead to place name on their calendar - 3 at a time)	(NOTE: Figures affected by holiday week) 0-3 Landmen
EAGLE FORD (PROPER)	(TX)	Lavaca	10 Landmen	6-10 Landmen	9-10 Landmen	(NOTE: Figures affected by holiday week) 0-5 Landmen
EAGLE FORD (NORTHEAST)	(TX)	Bastrop	4-5 Landmen	5 Landmen	5 Landmen	(NOTE: Figures affected by holiday week) 0-3 Landmen
EAGLE FORD (NORTHEAST)	(TX)	Fayette	10-15 Landmen (by appointment only)	10 Landmen (by appointment only)	10 Landmen (by appointment only)	(NOTE: Figures affected by holiday week) 0-8 Landmen
EAGLE FORD (NORTHEAST)	(TX)	Lee	Less than 5 Landmen	5 Landmen	3-5 Landmen	(NOTE: Figures affected by holiday week) 0-4 Landmen
EAGLE FORD (NORTHEAST)	(TX)	Washington	8-10 Landmen	6-10 Landmen	9-10 Landmen	(NOTE: Figures affected by holiday week) 0-5 Landmen
EAGLE FORD (NORTHEAST)	(TX)	Burleson	5 Landmen	3-5 Landmen	4-5 Landmen	(NOTE: Figures affected by holiday week) 0-3 Landmen
EAGLE FORD (NORTHEAST)	(TX)	Milam	10 Landmen (by appointment only - 4 at a time in vault)	Less than 10 Landmen (by appointment only - 4 at a time in vault)	7-10 Landmen (by appointment only - 4 at a time in vault)	(NOTE: Figures affected by holiday week) 0-10 Landmen
EAGLE FORD (NORTHEAST)	(TX)	Brazos	0-1 Landman (records available online - appointment no longer required)	0-2 Landmen (records available online - appointment no longer required)	0-2 Landmen (records available online - appointment no longer required)	(NOTE: Figures affected by holiday week) 0-1 Landman
EAGLE FORD (NORTHEAST)	(TX)	Robertson	5 Landmen	5 Landmen	3-5 Landmen	(NOTE: Figures affected by holiday week) 0-5 Landmen
EAGLE FORD (NORTHEAST)	(TX)	Grimes	5 Landmen	4-5 Landmen	5 Landmen	(NOTE: Figures affected by holiday week) 0-4 Landmen
EAGLE FORD (NORTHEAST)	(TX)	Leon	4-5 Landmen	5 Landmen	3-5 Landmen	(NOTE: Figures affected by holiday week) 0-5 Landmen
EAGLE FORD (NORTHEAST)	(TX)	Madison	3-4 Landmen	5 Landmen	Less than 5 Landmen	(NOTE: Figures affected by holiday week) 0-4 Landmen
EAGLE FORD (NORTHEAST)	(TX)	Walker	5 Landmen	Less than 5 Landmen	4-5 Landmen	(NOTE: Figures affected by holiday week) 0-3 Landmen
PERMIAN	(TX)	Reeves	4-5 Landmen	4-5 Landmen	5 Landmen	(NOTE: Figures affected by holiday week) 0-4 Landmen
PERMIAN	(TX)	Ward	10-12 Landmen	9-10 Landmen	8-10 Landmen	(NOTE: Figures affected by holiday week) 0-8 Landmen

Courthouse Activity Scout Report



<u>Play</u>	<u>State</u>	<u>County</u>	<u>Courthouse Activity</u> 11/02/2020 - 11/06/2020	<u>Courthouse Activity</u> 11/09/2020 - 11/13/2020	<u>Courthouse Activity</u> 11/16/2020 - 11/20/2020	<u>Courthouse Activity</u> 11/23/2020 - 11/27/2020
PERMIAN	(TX)	Pecos	1-2 Landmen	0-1 Landman	0-2 Landmen	(NOTE: Figures affected by holiday week) 0-1 Landman
PERMIAN	(TX)	Upton	9-10 Landmen (by appointment only - 4 people at a time; only M-TR)	10-12 Landmen (by appointment only - 4 people at a time; only M-TR)	10 Landmen (by appointment only - 4 people at a time; only M-TR)	(NOTE: Figures affected by holiday week) 0-6 Landmen
PERMIAN	(TX)	Ector	0-1 Landman	0-2 Landmen	0-2 Landmen	(NOTE: Figures affected by holiday week) 0-1 Landman
PERMIAN	(TX)	Martin	5 Landmen (3 at a time)	4-5 Landmen (3 at a time)	5 Landmen (3 at a time)	(NOTE: Figures affected by holiday week) 0-4 Landmen
PERMIAN	(TX)	Midland	5 Landmen (by appointment only)	5 Landmen (by appointment only)	4-5 Landmen (by appointment only)	(NOTE: Figures affected by holiday week) 0-3 Landmen
PERMIAN	(TX)	Glasscock	0-1 Landman (records online)	0-1 Landman (records online)	0-1 Landman (records online)	(NOTE: Figures affected by holiday week) 0 Landmen
PERMIAN	(TX)	Howard	1-2 Landmen	2 Landmen	1-2 Landmen	(NOTE: Figures affected by holiday week) 0-1 Landman
PERMIAN	(TX)	Reagan	1-2 Landmen (call ahead of time to let them know you're on the way)	1-3 Landmen (call ahead of time to let them know you're on the way)	4 Landmen (call ahead of time to let them know you're on the way)	(NOTE: Figures affected by holiday week) 0-3 Landmen
PERMIAN	(TX)	Crane	0 Landmen (All land records online)	0 Landmen (All land records online)	0 Landmen (All land records online)	(NOTE: Figures affected by holiday week) 0 Landmen
DELAWARE	(NM)	Lea	4-5 Landmen (5 at a time for 1 hour slots)	5-6 Landmen (5 at a time for 1 hour slots)	4-5 Landmen (5 at a time for 1 hour slots)	(NOTE: Figures affected by holiday week) 0-4 Landmen
DELAWARE	(NM)	Eddy	15 Landmen (7 people at a time with 2 hr limit)	15 Landmen (7 people at a time with 2 hr limit)	10-15 Landmen (7 people at a time with 2 hr limit)	(NOTE: Figures affected by holiday week) 0-12 Landmen
DELAWARE	(TX)	Loving	0-2 Landmen (by appointment only)	1-3 Landmen (by appointment only)	1-2 Landmen (by appointment only)	(NOTE: Figures affected by holiday week) 0-2 Landmen
DELAWARE	(TX)	Winkler	0-2 Landmen (limited to 3 at a time)	0-3 Landmen (limited to 3 at a time)	0-1 Landman (limited to 3 at a time)	(NOTE: Figures affected by holiday week) 0-2 Landmen
DELAWARE	(TX)	Andrews	5 Landmen	4-6 Landmen	5-6 Landmen	(NOTE: Figures affected by holiday week) 0-3 Landmen
DELAWARE	(TX)	Gaines	1-2 Landmen	0-2 Landmen	0-1 Landman	(NOTE: Figures affected by holiday week) 0-1 Landman
UTICA	(OH)	Jefferson	8-10 Landmen (by appointment only)	9-10 Landmen (by appointment only)	10 Landmen (by appointment only)	(NOTE: Figures affected by holiday week) 0-8 Landmen
UTICA	(OH)	Harrison	0 Landmen (ALL DOCUMENTS ONLINE - CLOSED TO PUBLIC FOR LAND RECORDS SEARCHES DUE TO COVID)	0 Landmen (ALL DOCUMENTS ONLINE - CLOSED TO PUBLIC FOR LAND RECORDS SEARCHES DUE TO COVID)	0 Landmen (ALL DOCUMENTS ONLINE - CLOSED TO PUBLIC FOR LAND RECORDS SEARCHES DUE TO COVID)	0 Landmen (ALL DOCUMENTS ONLINE - CLOSED TO PUBLIC FOR LAND RECORDS SEARCHES DUE TO COVID)
UTICA	(OH)	Belmont	15 Landmen	10-15 Landmen	10-15 Landmen	(NOTE: Figures affected by holiday week) 0-10 Landmen

Courthouse Activity Scout Report



<u>Play</u>	<u>State</u>	<u>County</u>	<u>Courthouse Activity</u> 11/02/2020 - 11/06/2020	<u>Courthouse Activity</u> 11/09/2020 - 11/13/2020	<u>Courthouse Activity</u> 11/16/2020 - 11/20/2020	<u>Courthouse Activity</u> 11/23/2020 - 11/27/2020
UTICA	(OH)	Guernsey	5 Landmen	5 Landmen	4-5 Landmen	(NOTE: Figures affected by holiday week) 0-3 Landmen
UTICA	(OH)	Noble	0 Landmen (CLOSED TO PUBLIC FOR LAND RECORDS SEARCHES DUE TO COVID)	0 Landmen (CLOSED TO PUBLIC FOR LAND RECORDS SEARCHES DUE TO COVID)	0 Landmen (CLOSED TO PUBLIC FOR LAND RECORDS SEARCHES DUE TO COVID)	0 Landmen (CLOSED TO PUBLIC FOR LAND RECORDS SEARCHES DUE TO COVID)
UTICA	(OH)	Monroe	0 Landmen	0 Landmen	0 Landmen	0 Landmen
UTICA	(OH)	Washington	12-15 Landmen (by appointment only - 4 at a time for increment of 2 hrs)	10-15 Landmen (by appointment only - 4 at a time for increment of 2 hrs)	10-15 Landmen (by appointment only - 4 at a time for increment of 2 hrs)	(NOTE: Figures affected by holiday week) 0-10 Landmen
UTICA	(OH)	Morgan	3-5 Landmen	4-5 Landmen	5 Landmen	(NOTE: Figures affected by holiday week) 0-3 Landmen
UTICA	(WV)	Ohio	10-12 Landmen (by appointment only - 2 hr time slots)	15 Landmen (by appointment only - 2 hr time slots)	10 Landmen (by appointment only - 2 hr time slots)	(NOTE: Figures affected by holiday week) 0-10 Landmen
UTICA	(WV)	Marshall	10 Landmen (by appointment only - 2hour time slots; 2 people at a time; fully booked)	8-10 Landmen (by appointment only - 2hour time slots; 2 people at a time; fully booked)	6-10 Landmen (by appointment only - 2hour time slots; 2 people at a time; fully booked)	(NOTE: Figures affected by holiday week) 0-10 Landmen
UTICA	(WV)	Wetzel	0-1 Landman	0-2 Landmen	0-2 Landmen	(NOTE: Figures affected by holiday week) 0-2 Landmen
UTICA	(WV)	Tyler	4-5 Landmen	3-5 Landmen	3-4 Landmen	(NOTE: Figures affected by holiday week) 0-4 Landmen
UTICA	(WV)	Doddridge	10 Landmen (by appointment only -1.5 hr timeslots - 2 at a time - 8:30 - 3:30)	9-10 Landmen (by appointment only -1.5 hr timeslots - 2 at a time - 8:30 - 3:30)	10 Landmen (by appointment only -1.5 hr timeslots - 2 at a time - 8:30 - 3:30)	(NOTE: Figures affected by holiday week) 0-10 Landmen
UTICA	(WV)	Harrison	5 Landmen	4-5 Landmen	4-5 Landmen	(NOTE: Figures affected by holiday week) 0-3 Landmen
UTICA	(WV)	Ritchie	1-2 Landmen (by appointment only - recons are online)	1-2 Landmen (by appointment only - recons are online)	0-2 Landmen (by appointment only - recons are online)	(NOTE: Figures affected by holiday week) 0-1 Landman
UTICA	(WV)	Gilmer	4-5 Landmen	5 Landmen	5 Landmen	(NOTE: Figures affected by holiday week) 0-4 Landmen
UTICA	(WV)	Webster	10 Landmen	9-10 Landmen	8-10 Landmen	(NOTE: Figures affected by holiday week) 0-6 Landmen
UTICA	(WV)	Upsher	4-5 Landmen	3-4 Landmen	5 Landmen	(NOTE: Figures affected by holiday week) 0-2 Landmen
UTICA	(PA)	Washington	3-5 Landmen	4-5 Landmen	4-5 Landmen	(NOTE: Figures affected by holiday week) 0-3 Landmen
UTICA	(PA)	Greene	5 Landmen (by appointment only from 9-2 for 45 minutes each)	4-5 Landmen (by appointment only from 9-2 for 45 minutes each)	5 Landmen (by appointment only from 9-2 for 45 minutes each)	(NOTE: Figures affected by holiday week) 0-4 Landmen
UTICA	(PA)	Allagheny	10 Landmen	9-10 Landmen	8-10 Landmen	(NOTE: Figures affected by holiday week) 0-8 Landmen
MARCELLUS	(PA)	Bradford	10 Landmen (by appointment only 9-12 or 1-4 with 4 people in each slot)	10-12 Landmen (by appointment only 9-12 or 1-4 with 4 people in each slot)	8-10 Landmen (by appointment only 9-12 or 1-4 with 4 people in each slot)	(NOTE: Figures affected by holiday week) 0-6 Landmen

Courthouse Activity Scout Report



<u>Play</u>	<u>State</u>	<u>County</u>	<u>Courthouse Activity</u> 11/02/2020 - 11/06/2020	<u>Courthouse Activity</u> 11/09/2020 - 11/13/2020	<u>Courthouse Activity</u> 11/16/2020 - 11/20/2020	<u>Courthouse Activity</u> 11/23/2020 - 11/27/2020
MARCELLUS	(PA)	Wyoming	0 Landmen (online resources available)	0 Landmen (online resources available)	0 Landmen (online resources available)	0 Landmen (online resources available)
MARCELLUS	(PA)	Susquehanna	0 Landmen (online resources available)	0 Landmen (online resources available)	0 Landmen (online resources available)	0 Landmen (online resources available)
MARCELLUS	(PA)	Lackawanna	9-10 Landmen (by appointment only - all records online)	8-10 Landmen (by appointment only - all records online)	7-10 Landmen (by appointment only - all records online)	(NOTE: Figures affected by holiday week) 0-8 Landmen
MARCELLUS	(PA)	Wayne	4-5 Landmen (by appointment only)	5 Landmen (by appointment only)	3-5 Landmen (by appointment only)	(NOTE: Figures affected by holiday week) 0-4 Landmen
MARCELLUS	(PA)	Tioga	4 Landmen	2-3 Landmen	3-4 Landmen	(NOTE: Figures affected by holiday week) 0-2 Landmen
POWDER RIVER	(WY)	Sheridan	N/A - SEE PREVIOUS WEEK	N/A - SEE PREVIOUS WEEK	N/A - SEE PREVIOUS WEEK	N/A - SEE PREVIOUS WEEK
POWDER RIVER	(WY)	Campbell	5 Landmen	5 Landmen	4 Landmen	(NOTE: Figures affected by holiday week) 0-4 Landmen
POWDER RIVER	(WY)	Crook	4 Landmen	4 Landmen	5 Landmen	(NOTE: Figures affected by holiday week) 0-4 Landmen
POWDER RIVER	(WY)	Johnson	2 Landmen	3 Landmen	2 Landmen	(NOTE: Figures affected by holiday week) 0-2 Landmen
POWDER RIVER	(WY)	Natrona	5 Landmen	3-4 Landmen	5 Landmen	(NOTE: Figures affected by holiday week) 0-4 Landmen
POWDER RIVER	(WY)	Converse	0-2 Landmen (all information online)	0-1 Landman (all information online)	0-2 Landmen (all information online)	(NOTE: Figures affected by holiday week) 0-1 Landman
POWDER RIVER	(WY)	Weston	1-4 Landmen	2-3 Landmen	1-3 Landmen	(NOTE: Figures affected by holiday week) 0-2 Landmen
POWDER RIVER	(WY)	Niobrara	0-1 Landman	1 Landman	1 Landman	(NOTE: Figures affected by holiday week) 0 Landmen
POWDER RIVER	(WY)	Big Horn	1-2 Landmen	0-2 Landmen	2 Landmen	(NOTE: Figures affected by holiday week) 0-2 Landmen
POWDER RIVER	(MT)	Powder River	2 Landmen	1 Landman	2 Landmen	(NOTE: Figures affected by holiday week) 0-1 Landman
POWDER RIVER	(MT)	Carter	1 Landmen	1 Landman	1-2 Landmen	(NOTE: Figures affected by holiday week) 0-1 Landman
ARK-LA-TEX	(AR)	Miller	0-1 Landman	1 Landman	0-1 Landman	(NOTE: Figures affected by holiday week) 0-1 Landman
ARK-LA-TEX	(AR)	Lafayette	10 Landmen	8 Landmen	9-10 Landmen	(NOTE: Figures affected by holiday week) 0-8 Landmen
ARK-LA-TEX	(AR)	Columbia	4 Landmen	3-5 Landmen	5 Landmen	(NOTE: Figures affected by holiday week) 0-4 Landmen

Courthouse Activity Scout Report



<u>Play</u>	<u>State</u>	<u>County</u>	<u>Courthouse Activity</u>	<u>Courthouse Activity</u>	<u>Courthouse Activity</u>	<u>Courthouse Activity</u>
			11/02/2020 - 11/06/2020	11/09/2020 - 11/13/2020	11/16/2020 - 11/20/2020	11/23/2020 - 11/27/2020
ARK-LA-TEX	(AR)	Union	0 Landmen (CLOSED TO PUBLIC FOR LAND RECORDS SEARCHES DUE TO COVID)	0 Landmen (CLOSED TO PUBLIC FOR LAND RECORDS SEARCHES DUE TO COVID)	0 Landmen (CLOSED TO PUBLIC FOR LAND RECORDS SEARCHES DUE TO COVID)	0 Landmen (CLOSED TO PUBLIC FOR LAND RECORDS SEARCHES DUE TO COVID)
ARK-LA-TEX	(LA)	Caddo	3-5 Landmen	5 Landmen	4-5 Landmen	(NOTE: Figures affected by holiday week) 0-3 Landmen
ARK-LA-TEX	(LA)	Bossier	0-1 Landman	0-2 Landmen	0-1 Landman	(NOTE: Figures affected by holiday week) 0-1 Landman
ARK-LA-TEX	(LA)	Webster	5 Landmen (3 permitted in Vault at a time - first come first serve)	3 Landmen (3 permitted in Vault at a time - first come first serve)	4-5 Landmen (3 permitted in Vault at a time - first come first serve)	(NOTE: Figures affected by holiday week) 0-4 Landmen
ARK-LA-TEX	(LA)	Claiborne	4-5 Landmen	3-5 Landmen	3-5 Landmen	(NOTE: Figures affected by holiday week) 0-2 Landmen
ARK-LA-TEX	(LA)	Bienville	4 Landmen	4 Landmen	5 Landmen	(NOTE: Figures affected by holiday week) 0-3 Landmen
ARK-LA-TEX	(LA)	Red River	3 Landmen	2 Landmen	3 Landmen	(NOTE: Figures affected by holiday week) 0-2 Landmen
ARK-LA-TEX	(LA)	De Soto	2-3 Landmen	1 Landman	2 Landmen	(NOTE: Figures affected by holiday week) 0-2 Landmen
ARK-LA-TEX	(LA)	Sabine	5 Landmen	4 Landmen	4 Landmen	(NOTE: Figures affected by holiday week) 0-4 Landmen
ARK-LA-TEX	(LA)	Natchitoches	4-5 Landmen	5 Landmen	5 Landmen	(NOTE: Figures affected by holiday week) 0-4 Landmen
ARK-LA-TEX	(TX)	Cass	0-1 Landman	0-2 Landmen	0-2 Landmen	(NOTE: Figures affected by holiday week) 0-1 Landman
ARK-LA-TEX	(TX)	Marion	0-3 Landmen	0-1 Landman	0-2 Landmen	(NOTE: Figures affected by holiday week) 0-1 Landman
ARK-LA-TEX	(TX)	Upsher	0-1 Landman	0-1 Landman	0-2 Landmen	(NOTE: Figures affected by holiday week) 0-1 Landman
ARK-LA-TEX	(TX)	Gregg	0 Landmen	0 Landmen	0 Landmen	(NOTE: Figures affected by holiday week) 0 Landmen
ARK-LA-TEX	(TX)	Harrison	8 Landmen (Must wear mask)	8-10 Landmen (Must wear mask)	9-10 Landmen (Must wear mask)	(NOTE: Figures affected by holiday week) 0-6 Landmen
ARK-LA-TEX	(TX)	Rusk	4 Landmen (By appointment only)	4-5 Landmen (By appointment only)	4-5 Landmen (By appointment only)	(NOTE: Figures affected by holiday week) 0-3 Landmen
ARK-LA-TEX	(TX)	Panola	10 Landmen (By appointment only - records available online at TX Land Records)	9-10 Landmen (By appointment only - records available online at TX Land Records)	7-10 Landmen (By appointment only - records available online at TX Land Records)	(NOTE: Figures affected by holiday week) 0-8 Landmen
ARK-LA-TEX	(TX)	Nacogdoches	CLOSED TO PUBLIC DUE TO COVID (Now offer all documens online through 3rd party website - Views are free/ print \$1)	CLOSED TO PUBLIC DUE TO COVID (Now offer all documens online through 3rd party website - Views are free/ print \$1)	CLOSED TO PUBLIC DUE TO COVID (Now offer all documens online through 3rd party website - Views are free/ print \$1)	CLOSED TO PUBLIC DUE TO COVID (Now offer all documens online through 3rd party website - Views are free/ print \$1)
ARK-LA-TEX	(TX)	San Augustine	1-2 Landmen (must wear mask)	0-2 Landmen (must wear mask)	0-2 Landmen (must wear mask)	(NOTE: Figures affected by holiday week) 0-2 Landmen

Courthouse Activity Scout Report



PaladinLandGroup

<u>Play</u>	<u>State</u>	<u>County</u>	<u>Courthouse Activity</u> <i>11/02/2020 - 11/06/2020</i>	<u>Courthouse Activity</u> <i>11/09/2020 - 11/13/2020</i>	<u>Courthouse Activity</u> <i>11/16/2020 - 11/20/2020</i>	<u>Courthouse Activity</u> <i>11/23/2020 - 11/27/2020</i>
ARK-LA-TEX	(TX)	Sabine	0 Landmen (Must wear mask -1 at at ime)	0 Landmen (Must wear mask -1 at at ime)	0 Landmen (Must wear mask -1 at at ime)	(NOTE: Figures affected by holiday week) 0 Landmen
ARK-LA-TEX	(TX)	Shelby	0 Landmen (1 Landman every frew months)	0 Landmen (1 Landman every frew months)	0 Landmen (1 Landman every frew months)	(NOTE: Figures affected by holiday week) 0 Landmen

If you would like to request that any additional plays or basins to be added to this report, please email your request to info@paladinlandgroup.com