



# Your Expert Partner In Strategic Site Acquisition



**SERVICES AVAILABLE NATIONWIDE**

## WHY TRUST INKED

Navigating the complexities of securing property rights for energy and infrastructure projects can be challenging without the right expertise and tools. These barriers can delay or even derail obtaining site control for renewable projects, securing rights-of-way for transmission lines or pipelines, and ensuring suitable leases for mineral extraction projects.

This is where Inked can help. We excel at guiding one of the most critical and competitive phases of development to ensure your project finds success. By blending the expertise of our skilled teams, modern land management technology, and extensive industry experience, we streamline the processes of property acquisition, title verification, and permitting.

Work with us and have an agile partner who is there for you through every challenge and every win!

## WHO WE SUPPORT

Developers and operators pursuing industrial-scale energy and infrastructure projects.



**RENEWABLE ENERGY**  
(Distributed and Utility Scale)



**OIL & GAS**  
(Upstream, Midstream and Downstream)



**HYDROGEN**



**TELECOM**



**INFRASTRUCTURE**



## HOW WE HELP

- ⊕ Greenfield Project Management
- ⊕ Prospecting and Site Targeting
- ⊕ Land Acquisition Campaigns
- ⊕ Local Permitting
- ⊕ Gen-Tie Right-of-Way Acquisition
- ⊕ Full Suite of Title Services
- ⊕ Transmission Right-of-Way Acquisition
- ⊕ Subsurface Waiver Acquisition
- ⊕ Reclamation Support
- ⊕ Data and Data Room Management
- ⊕ Due Diligence for Mergers and Acquisitions
- ⊕ Geographic Information Systems (GIS)

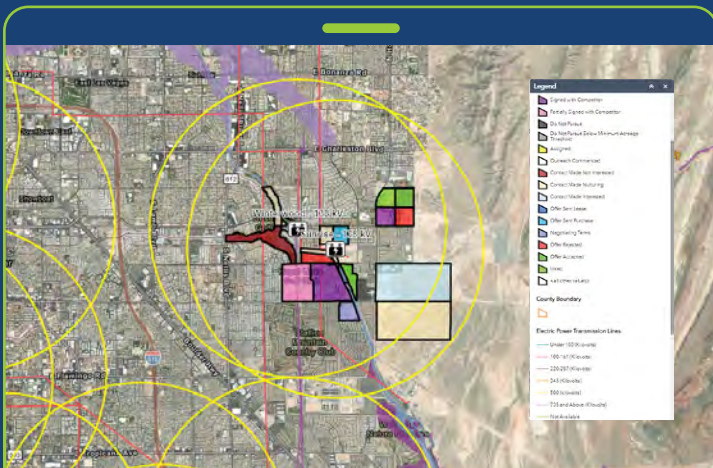
## A LOOK AT OUR SITE CONTROL PROCESS



## MANAGE YOUR PROJECT IN ONE PLACE WITH INKED LAND FLOW.

It's time for a new way to increase project transparency and efficiency. Our web-based platform helps you get land records faster, track acquisition status in real time, manage your budget, and more. Land Flow is made to help meet your project goals!

- ✓ Get Records Faster
- ✓ Access Real-Time GIS
- ✓ Find Simplicity & Functionality
- ✓ Manage Your Budget
- ✓ Examine Critical Documents
- ✓ Visualize Field Communications
- ✓ Streamline Reporting Process



**NEED HELP WITH A PROJECT?  
TALK WITH US TODAY.**



© Inked Land Company  
134 East 29th Street  
Loveland, Colorado 80538  
Tel: (970) 200-8545  
contact@inkedlandco.com  
www.inkedlandco.com

**Lance Fondren,**  
CEO  
lance@inkedlandco.com

**Troy Dixon,**  
Business Development  
troy@inkedlandco.com